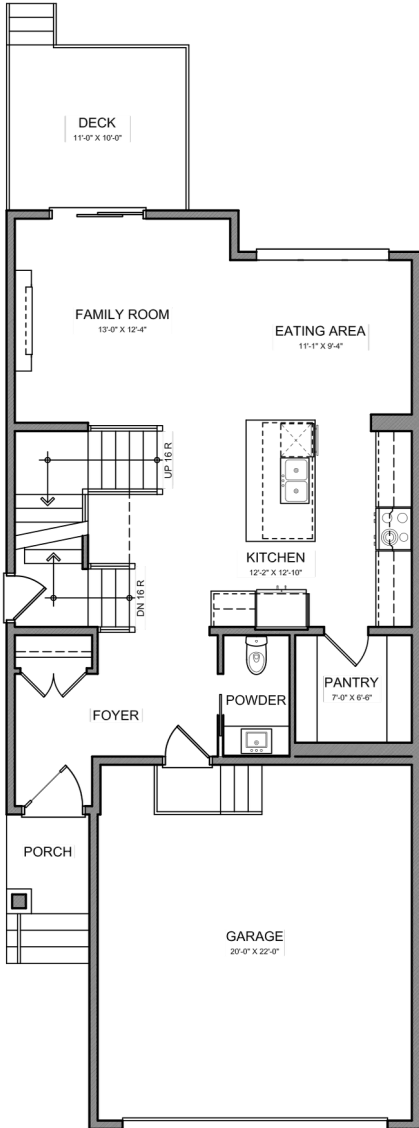




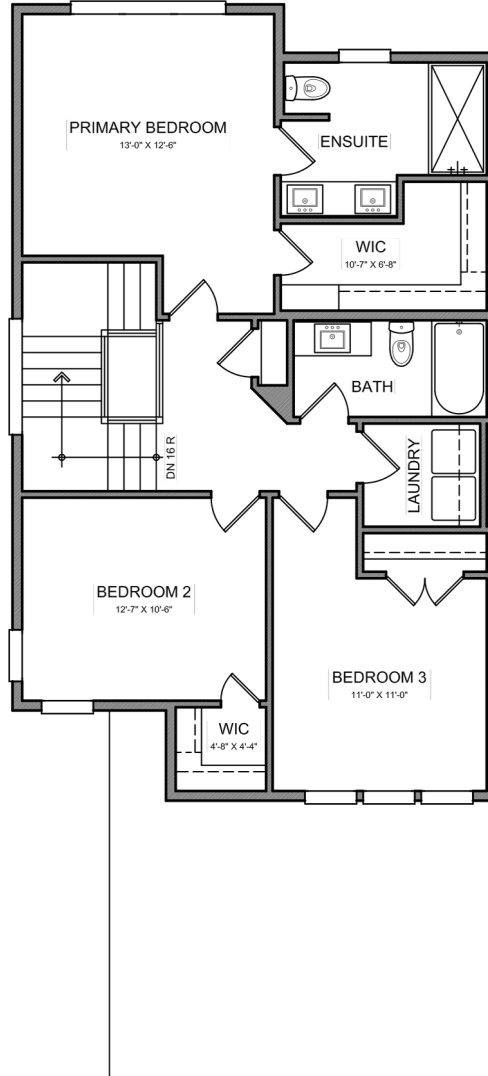
‘BUILD TRUST. BUILD BETTER.’

FEATURES:

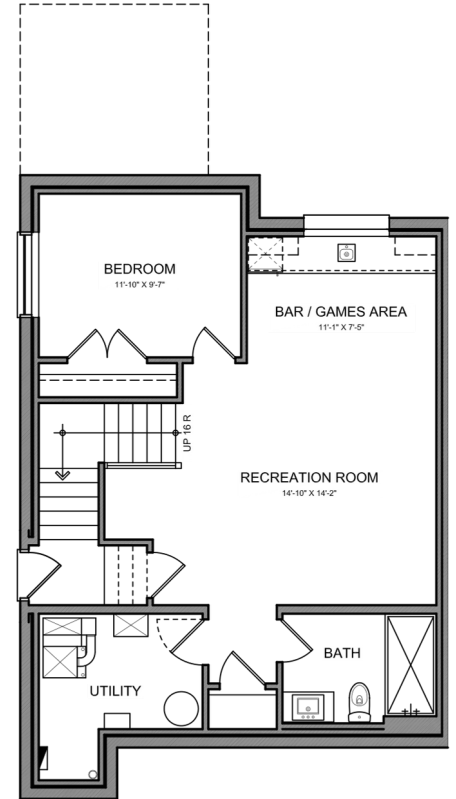
- o 9' Main Floor & Basement Ceiling Height
- o Triple Pane Windows Throughout
- o Upgraded Quartz Counter Tops
- o Luxury Spindle Railings
- o Gasline to BBQ
- o Upgraded 2"x6" Sound Smart Partition Wall
- o Sleek Stainless Steel Appliances
- o Electric Fireplace
- o Full Height Cabinets
- o Separate Side Entrance
- o Double Attached Garage
- o Walk in Laundry Room
- o Tankless Hot Water
- o Full HRV System



MAIN FLOOR PLAN
828 SQ.FT.



UPPER FLOOR PLAN
955 SQ.FT.



BASEMENT DEVELOPMENT PLAN
675 SQ.FT. (DEVELOPED)

NOTES:

CONTACT:



Sales Associate: Brigid Peloso



Phone: 403.256.3992



Email: brigid@gogolden.group



Website: <https://gthb.ca/contact/>